

MONTHLY MEMBERSHIP PROGRESS REPORT

LOCATION NIGERIA

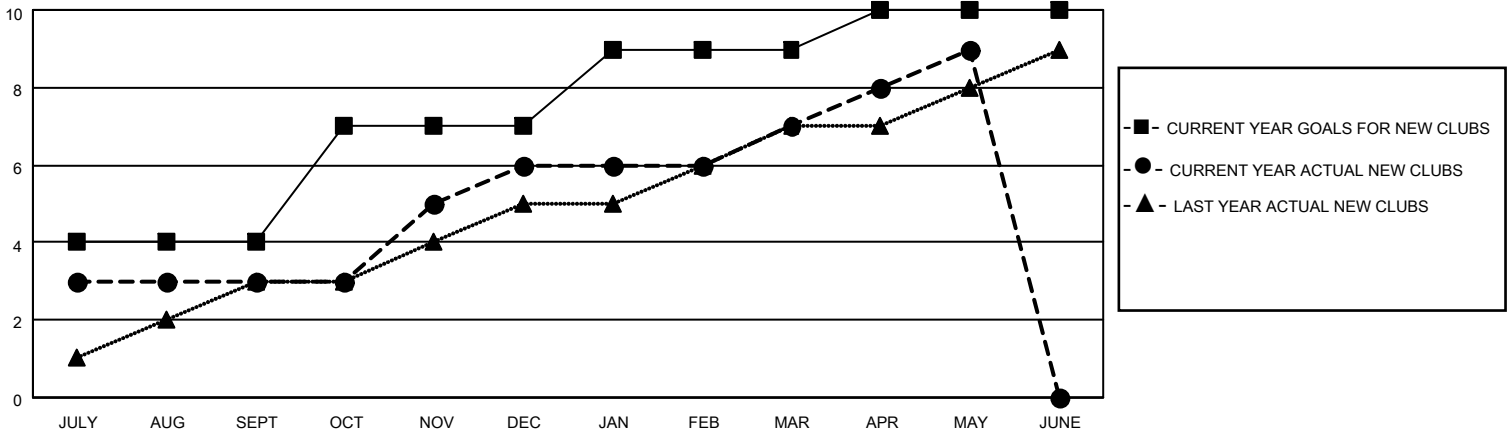
District 404 B2

Results as of: 5/31/2023

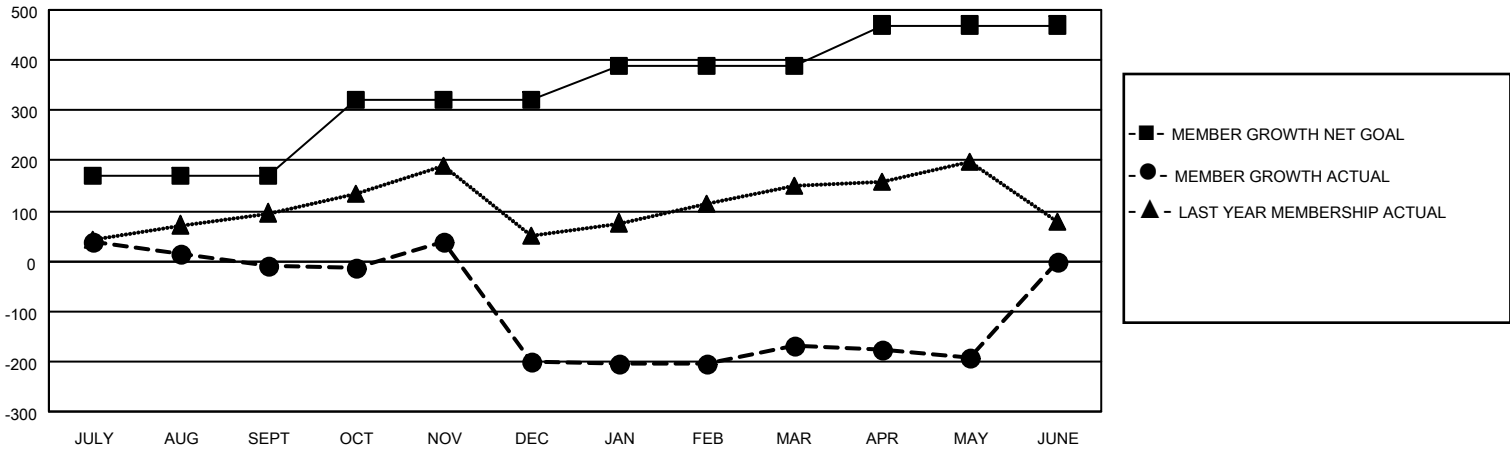
Clubs			
RESULTS FOR 2022-2023			
QUARTER	NEW CLUB GOAL	NEW CLUBS	DROPPED CLUBS
JULY/AUG/SEPT	4	3	3
OCT/NOV/DEC	3	3	10
JAN/FEB/MAR	2	1	1
APR/MAY/JUNE	1	2	1

Members			
RESULTS FOR 2022-2023			
QUARTER	MEMBER GROWTH NET GOAL	MEMBER GROWTH ACTUAL	DROPPED MEMBERS ACTUAL (including transfers)
JULY/AUG/SEPT	170	122	119
OCT/NOV/DEC	150	166	346
JAN/FEB/MAR	70	152	91
APR/MAY/JUNE	80	133	121

GOALS AND ACTUAL NEW CLUBS CUMULATIVE



GOALS AND ACTUAL MEMBERS CUMULATIVE



DROPPED CLUBS: 14	
DROPPED MEMBERS	
DECEASED	7
CLUB CANCELLED	254
OTHER	418
TOTAL	679

68 CLUBS OF 94 ADDED 1 OR MORE NEW MEMBERS

[CLICK HERE FOR CUMULATIVE MEMBERSHIP DATA](#)

<u>GENDER DISTRIBUTION</u>	
MALE	1,213 (55.98%)
FEMALE	954 (44.02%)
NON BINARY	0 (0.00%)
PREFER NOT TO ANSWER	0 (0.00%)
TOTAL FAMILY UNIT MEMBERS 215	
FAMILY MEMBERS PAYING HALF DUES 118	